

Wisdom Software

Putting the pieces together...

Powerful and comprehensive tools for improving your business



At last! Business Improvement Software for Everyone!

Improving and growing a business means enhancing quality, cutting expenses, achieving better cash flow, and of course, enjoying a profit. The key is breaking down the big goals into smaller manageable ones, and then putting all the pieces together.

Wisdom Software was designed by Wisdom business consultants and engineers with a lifetime of practical experience in the field. We understand what businesses need to achieve maximum improvement results.

Our software products include:

WisdomLive! - for planning and managing your business on the web

WisdomWorks® - a suite of Business Reengineering Software Tools for process modeling, data modeling and document management

- **ProcessWorks®** - for process modeling
- **DataWorks!** - for data modeling



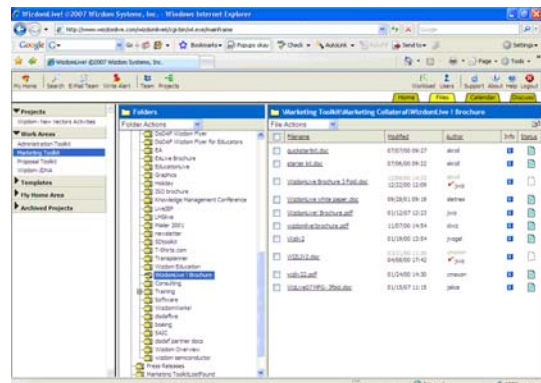
WisdomLive!™

Created by the people who wrote the books on BPR and Enterprise Architecture, **WisdomLive!** is the practical, real-world solution to managing projects, people, and tasks.

WisdomLive! is a powerful web-based business management tool that helps you manage a multitude of business activities and their associated knowledge.

WisdomLive! helps you and your organization get more done, and done quickly and efficiently. It provides an online means for sharing information, as well as working together in teams.

As a complete Business Process Portal, **WisdomLive!** is ideal for project and process planning. Its intuitive design allows you to easily communicate and organize communication among managers and team members. Helps individuals and teams (and teams-of-teams) focus on only the work for which they are responsible.



Use **WisdomLive!** to assemble your best team...wherever they live, anywhere in the world.

- Connect your team via a private confidential information system.
- Create a process to address the business issue at hand.
- Manage an enterprise-wide business solution to a successful conclusion

Wisdom
the process people

WisdomWorks!

Start-to-finish, seamless business process tools for creating, analyzing, editing and implementing process flows and data models.

Wisdom has combined years of hands-on experiences in business process improvement, with our years of experience in software development to bring you WisdomWorks! – a robust business improvement solution. WisdomWorks! takes the guesswork out of the process.

WisdomWorks! has all the elements you need to make and implement your improvement goals. Each product seamlessly integrates with its companion tools; you only need to enter data one time! This saves you time and decreases your project costs.

- Improve Business
- Reduce Cost
- Increase Efficiency
- Decrease Process Time
- Elevate Quality
- Uncover new opportunities

Choose the WisdomWorks! Solution that best meets YOUR needs and project scope!

- **WisdomWorks! Standard** with ProcessWorks! for activity modeling
- **WisdomWorks! Professional** with ProcessWorks! for activity modeling and DataWorks! for data modeling, plus analysis tools.
- **WisdomWorks! Enterprise** with ProcessWorks! for activity modeling, DataWorks! for data modeling, analysis tools and Master Projects capability.

With WisdomWorks! You Can:

- Map processes using IDEF0
- Evaluate Current Architecture design
- Perform structured analysis modeling
- Define interoperability requirements
- Create and evaluate required framework

ORDERING INFORMATION

Wisdom Software *products* are available in several formats, with additional maintenance contracts and training. Please contact us about how to order, and what contract is right for you. For more information regarding our software and pricing, call in the U.S. 1-630-357-3000

ABOUT WIZDOM:

Since 1986, **Wisdom** has been a recognized leader in providing clients with innovative process-based business and software solutions. Wisdom's integrated software, training and consulting enables industry and government clients to communicate, plan and execute a unified strategy.

Wisdom Systems, Inc.
1300 Iroquois Avenue
Naperville, IL 60563

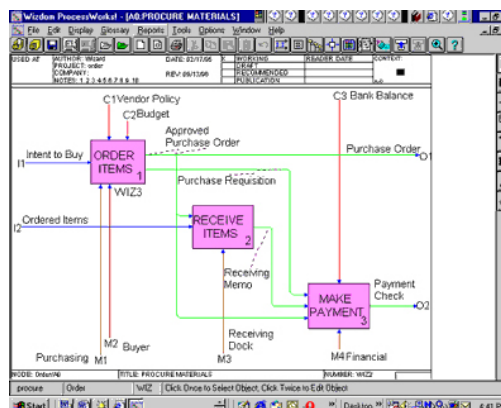
(630) 357-3000 phone
(630) 357-3059 fax
www.wisdom.com

ProcessWorks!

For Process Modeling

Modeling from the AS –IS to the TO-BE is easy with WisdomWorks! Use the **ProcessWorks! activity modeling tool** to diagram, or map out how each activity within your business works and how it fits together with all of the other activities. ProcessWorks! then gives you an overall picture or "roadmap" of your organization.

ProcessWorks! enables you to visualize your current processes and understand business requirements. From your activity model, you can quickly and accurately depict new process reengineering solutions with "what-if" models.



DataWorks!

For Data Modeling

Identify and refine information to meet organizational goals! DataWorks! for data modeling helps you diagram, or map out where information in your organization comes from, how it is used and who uses it. This gives you an automated overall picture (or roadmap) of specific information relationships in your organization. DataWorks! is based on IDEF1X). It enables you to analyze database entities, attributes and relationships, to guide systems development and information engineering.

DataWorks! helps you design a flexible, stable, and sharable database. This will enable you to maximize data sharing, minimize data redundancy, and make a positive impact on the effectiveness and bottom line of your organization.

Comprehensive Training

Professional training on the use of all our products is available and can be customized to meet your needs. The courses can be either at a basic level or more complex to navigate the advanced features of our tools. Courses can be combined to include tool training as well as Business Process Reengineering (BPR) methodology and Enterprise Architecture requirements.

Wisdom
the process people